



2025 Membership Information



Table *of* Contents

Welcome	3
<hr/>	
History & Leadership	5
<hr/>	
Memberships	11
<hr/>	
General Information	15
<hr/>	
Frequently Asked Questions	23
<hr/>	

W E L C O M E

Welcome to Blythefield Country Club, and thank you for your consideration of membership. For over 90 years, Blythefield Country Club has provided our members and families with the finest country club experience in West Michigan. As you will see in the following pages, membership with Blythefield provides many opportunities for you, your family, friends, and colleagues to enjoy.

Our social and sports activities are designed for fun, recreation, and competition for all ages! The crown jewel is our newly renovated 18 hole championship golf course which is considered to be one of the finest in the Midwest. Completed in November of 2020, the \$3.2 million course renovation and restoration, brings back the original splendor, as designed by Langford and Moreau in 1928, and further enhances the course for today's diverse players. We proudly host some of the best opportunities for golf tournaments and recreational golf you will find anywhere.

Our social events, J. Brewer's Restaurant, and dining rooms offer our membership high quality and enjoyable dining and social experiences. Our Junior Sports Programs and training, including Junior Golf, Swim & Dive, and Tennis are sure to keep our young members having fun while staying busy and challenged. BCC has been the proud host of The Meijer LPGA Classic for Simply Give since 2014, and was awarded "Best 'Foodie' Experience" and "Most Family Friendly" event on the LPGA Tour in 2019. Our members enjoy special privileges during this event and we look forward to hosting the Meijer LPGA Classic for Simply Give in 2025.

Blythefield has an exciting future ahead: In 2023, we celebrated the completion of a major renovation and construction project. Major upgrades included renovations to our existing clubhouse, construction of new clubhouse space, and significant renovations of our pool and tennis facilities.

With numerous tangible reasons to join Blythefield, we're sure you'll quickly find our greatest asset is the warmth and hospitality of our Club. We are confident you will create lifelong friendships for you and your entire family. Your fellow members and our professional team love fostering these relationships, and as a matter of fact, that's why we're here. *We look forward to you joining the Blythefield Family!*





History & Leadership

Our History

IN THE BEGINNING: THE LAND AND COURSE DESIGNERS

Blythefield Country Club was established on the ancestral lands of the Peoria Tribe of Indians and the Grand River Bands of Ottawa Indians. The George Miller family were the first non-Indigenous settlers on what is now Blythefield property. They farmed the land that is now the golf course and built a log cabin near the present clubhouse.

Our club and clubhouse have an interesting past, having initially been established in 1913 as an “auto club” for wealthy Grand Rapidsians. Plainfield Country Club, as it was first known, struggled to establish itself and experienced several false starts in its first three years of operation. The property was put up for sale in January 1916, and several ideas for use were floated, including establishment of a county prison farm or tuberculosis sanatorium. Ultimately, Augusta Brewer and her husband, Joseph Brewer, took ownership of the property in 1917 and began using it for private functions. In 1927, Mr. and Mrs. Brewer made plans to create a new club with a golf course—and Blythefield Country Club was born.

Blythefield’s time-tested golf course was a design of William B. Langford (1887–1977) and Theodore J. Moreau (1890–1942). Significant updates and restoration took place in 2020 under the direction of Chris Wilczynski, ASGCA.

FORMAL OPENING

The formal opening of Blythefield on June 14, 1929, was highlighted by the attendance of many golf celebrities. In the dedication foursome were legend Walter Hagen, the first Masters Tournament winner Horton Smith, celebrated local golfer Morey Wells, and Blythefield’s first golf professional, Nick Webber. One of the caddies that day, Marvin Stahl, went on to become a Blythefield Country Club golf professional, club member, a board member, the Club’s President and a celebrated “golf teacher to the stars,” including crooner Bing Crosby.

Our History

TOURNAMENT HISTORY

Blythefield has hosted three Western Golf Association major tournaments – the 1953 Western Amateur, the 1961 Western Open, and the 2005 Western Junior. The course has also been the site of countless other United States Golf Association, Michigan PGA, Golf Association of Michigan events and national qualifiers, and LPGA tournaments. The three major WGA events were won by Dale Morey, Arnold Palmer, and Rickie Fowler, respectively.

Blythefield Country Club has proudly hosted the Meijer LPGA Classic since its inception in 2014. This official LPGA Tour event features 144 of the top golfers from around the world and is played over four days in a 72-hole stroke play format.

PAST CHAMPIONS

2014: Mirim Lee, South Korea
2015: Lexi Thompson, USA
2016: Sei Young Kim, South Korea
2017: Brooke Henderson, Canada
2018: Ryu So Yeon, South Korea
2019: Brooke Henderson, Canada
2020: Tournament cancelled
2021: Nelly Korda, USA
2022: Jennifer Kupcho, USA
2023: Leona Maguire, Ireland
2024: Lilia Vu, USA



2025 Board of Directors

PRESIDENT

Cherrah Casserly
ccasserly@blythefieldcc.org

VICE PRESIDENT

Brett Maki
bmaki@plasan-na.com

SECRETARY

Aaron VanderGalien
aaron@deksia.com

TREASURER

Krista Hurst
khurst@blythefieldcc.org

PAST PRESIDENT

Tim Koster
tkoster@bhsins.com

DIRECTORS

Tracie Rich
tracierich@remax.net

Doug Dozeman
ddozeman@wnj.com

Nick Pash
pashnick@gmail.com

Aaron Klemm
aaron.klemm@inflectionpointwm.com

Club Management

GENERAL MANAGER/COO

Andrew Tkach

atkach@blythefieldcc.org

DIRECTOR OF MEMBERSHIP & EVENTS

Stacy Brogley

sbrogley@blythefieldcc.org

CONTROLLER

Tanja Kovacevic

tkovacevic@blythefieldcc.org

ACCOUNTING ASSOCIATE

Maryann Malaney

mmalaney@blythefieldcc.org

DIRECTOR OF GOLF

Will Burkhardt, PGA

wburkhardt@blythefieldcc.org

HEAD GOLF PROFESSIONAL

Juan Martinez, PGA

jmartinez@blythefieldcc.org

DIRECTOR OF INSTRUCTION

Andre Pillow, PGA

apillow@blythefieldcc.org

SUPERINTENDENT

Collin Romanick, GCSAA

cromanick@blythefieldcc.org





Memberships

Memberships at BCC

Golf Memberships

Golf memberships provide unlimited access to all of our facilities and amenities including our championship 18-hole golf course, signature golf events, and golf leagues; practice range use; swimming pool; tennis courts; fitness center; J. Brewer's dining room; and all social events.

Regular (Ages 40 and up)

Initiation Fee: \$20,000

Monthly Dues: \$1,042

Monthly Capital Assessment: \$175

Executive Intermediate (Ages 35-39)

Initiation Fee: \$15,000

Monthly Dues: \$833

Monthly Capital Assessment: \$140

Intermediate (Ages 30-34)

Initiation Fee: \$10,000

Monthly Dues: \$631

Monthly Capital Assessment: \$105

Junior (Ages 29 and under)

Initiation Fee: \$7,500

Monthly Dues: \$415

Monthly Capital Assessment: \$70

Social Memberships

Social memberships provide unlimited access to all of the club's facilities and amenities, including our swimming pool, tennis courts, fitness center, J. Brewer's dining room, and social events. Social members are limited to 6 starts per year on our 18-hole golf course.

Initiation Fee: \$5,000 Monthly Dues: \$347 Monthly Capital Assessment: \$105

Unlimited Range Pass: \$350 per year

Non-Resident Memberships

Granted only at the discretion of the Board of Directors. An applicant's permanent residence must be outside of the "Club Area" (Allegan, Barry, Ionia, Kent, Mecosta, Montcalm, Muskegon, Newaygo, and Ottawa counties) and they may not occupy a residence within the Club Area for more than **30 non-consecutive days per year.**

Initiation Fee: \$5,000 Monthly Dues: \$248 Monthly Capital Assessment: \$35

Guest greens fees and cart fees (if applicable) are charged for each round.

Memberships at BCC

Legacy Memberships

Offered to a child, sibling, parent, grandparent, or grandchild of any current member who has been in good standing with the Club for at least five (5) consecutive years. Social and golf memberships are available to legacy members; non-resident memberships and other special categories are not eligible for a legacy discount. Legacy members will receive a 50% discount on their initiation fee. Dues are as posted.

Miscellaneous Fees

Push Cart Rental

18 holes: \$11.00
9 holes: \$6.00

Push Cart Storage

\$200 per year (manual)
\$300 per year (electric)

Golf Club Storage

\$150 per year

Cart Fees

18 holes: \$27 per person
9 holes: \$15 per person

Unlimited Range Pass

\$350 per year
Social members only

Golf Association of Michigan (GAM) Membership

\$45 per year

Seasonal Shoe Shine

\$175 per year

Guest Greens Fees

18 holes: \$100
9 holes: \$55

Golf carts available for additional fee

Family Guest Greens Fees

18 holes: \$50
9 holes: \$25

Golf carts available for additional fee.

Includes parents, siblings, in-laws, and adult children of BCC member.

Junior Guest Greens Fees

18 holes: \$30
9 holes: \$15

Golf carts available for additional fee.

Includes children ages 17 and under.

Seasonal Guest Pass

\$1750 per year

Limited to 3 guests per day per membership. Limited to 50 claims against the Seasonal Guest Pass.

Memberships at BCC

Corporate Membership Accounts

Our Corporate Membership Program offers exclusive discounts on initiation fees. We are pleased to offer this program to groups of three (3) or more professionals from the same company or business. In this program, all NEW corporate members will receive 25% off their initiation fee. *Please speak to our Director of Membership & Events, Stacy Brogley, to see if you qualify for this program.*



Halley Alexa Photo



General Information

Hours of Operation

Administrative Office

Monday through Friday: 9:00am to 4:00pm

Fitness Center

Monday through Sunday: 5:00am to 8:00pm

J. Brewer's Dining Room—Hours vary seasonally

Monday: Closed

Tuesday through Thursday: 11:00am to 9:00pm

Friday and Saturday: 5:00pm to 10:00pm

Sunday Brunch: 9am to 2pm

Golf Shop—Hours vary seasonally

Monday: Closed

Tuesday through Saturday: 9:00am to 5:00pm

Sunday: 9:00am to 3:00pm

Golf Simulators—Hours vary seasonally

Monday: Closed

Tuesday through Saturday: 9:00am to 8:00pm

Sunday: 9:00am to 5:00pm

Golf Course & Practice Facilities

Hours vary seasonally, typically open with Golf Shop and close 1 hour before sunset.

Tennis Courts

Open 7 days a week from May 1st to October 31st

Lap Pool & Kiddie Pool

Open 7 days a week from Memorial Day to Labor Day

Golf Information

Times for Play

Member Type	Mon	Tues	Weds	Thurs	Fri	Sat	Sun
Golf	All day	All day	All day	All day	All day	All day	All day
Social	1pm or later	8-10am	8-10am	All day	3pm or later	3pm or later	3pm or later

Golf Course Etiquette

Pace of Play: Four hours per 18 holes. Finish no more than 15 minutes after the group in front of you.

Be Courteous: As you play, replace all divots; repair ball marks on greens; replace bunker rakes appropriately; use provided waste receptacles; be courteous and aware of other players as you play, drive carts, and carry on conversations. Keep carts fully on cart path when possible. For more information, please view the golf course etiquette video on our website. **A valid driver's license is required to drive a golf cart at BCC.**

Caddies

Caddies are assigned on a first-come, first-served basis. Caddies are available at the following 18-hole minimum rates. Please remember to tip your caddie!

Honor Caddie:	\$32.00/bag (+ gratuity)
A Caddie:	\$28.00/bag (+ gratuity)
B Caddie:	\$24.00/bag (+ gratuity)

General Information

POOL: The BCC swimming pool is designed for the entire family. The facility includes a junior Olympic-sized pool complete with diving well and lap lanes; a separate kiddie pool; children's play area; locker rooms; and plenty of poolside seating. Enjoy the sun and something to eat and drink at our poolside pavilion. Summer isn't complete without attending our poolside cookouts and special events!

RACQUETS: Our racquet sports program was created with a focus on a personalized experience. Our goal is to make every member or guest's visit to the tennis courts a positive one! Newly constructed in 2023, the BCC racquet sports facility has space for both tennis and pickleball. Contact our Racquet Sports Manager for information on lessons, leagues, and youth offerings: nhubbard@blythefieldcc.org

JUNIOR SPORTS: Everything you're looking for in a summer sports program can be found at Blythefield. We offer something for every child in your family: swim team, dive team, tennis & pickleball, and golf, at both instructional and competitive levels. We can assure you that your child will enjoy a summer of fun while learning the fundamentals and improving their skills. Teams and practices are organized by age and skill level to ensure the best fit for each player.

SPECIAL EVENTS: BCC hosts many social events throughout the year, and all members and their families are invited to participate. Activities include wine dinners, the annual Kentucky Derby party, monthly euchre games, holiday brunches, and much more. These events are posted on our website calendar and will also be highlighted in email communications to members. Reservations are required for most social events and are taken on a first-come, first-served basis. Please visit our website or mobile app for updates on all events.

TIPPING POLICY: A 10% service fee is included on every food and beverage purchase at the Club. This service fee goes directly to your server. If you received exemplary service, tipping is encouraged in all areas of the club. At the end of the year, an additional charge is entered on your account for the Employee Holiday fund, which is distributed between our hourly employees.

General Information

MONTHLY STATEMENT: A detailed statement of charges is emailed to the member's designated email address on the 1st of each month. Member statements reflect charges made to the account during the month, along with dues for the upcoming month. The due date for remittance is the 15th of each month. Members who do not submit payment by the 15th are subject to late fees. An automated payment program (auto-pay) is also available for your convenience. This program will automatically charge your checking account on the 15th of each month. Please contact **Maryann Malaney** at mmalaney@blythefieldcc.org for more information or to register for this service.

PRIVATE EVENTS: Blythefield Country Club is an ideal setting for both casual and grand occasions. We hope that you will think of us first when planning your next special event. Events at BCC include delicious cuisine, stress-free planning, stunning views of our golf course, and memories to treasure for a lifetime. Our staff are dedicated to your every need! Let us host your next shower, business meeting or conference, family event, wedding, and reception. Contact the Club for more information.

GOLF EVENTS AND LESSONS: BCC hosts many golf events throughout the year, including club championships, member-member and member-guest events, couples nights, and more. The format for most events is set up so that players of all skill levels can compete and have fun!

We offer a one-of-a-kind learning experience for players interested in private or semi-private instruction. Beginners will be introduced to the game of golf in a comfortable and fun atmosphere. Experienced players will appreciate our state of the art technology and professional instructors with experience teaching at the highest levels. For junior golfers, we offer a multitude of programs designed to take them to the next level of competitive play. Contact **Andre Pillow**, Director of Instruction, at 616-363-1902 or apillow@blythefieldcc.org for more information.

Dress Code

Club attire should be in good taste and reflect the "elegantly comfortable, tastefully casual" character of the club. Members are responsible for the attire of their guests and their children, regardless of age. The Blythefield Country Club staff and Board of Directors reserve the right to respectfully and discreetly enforce these dress code rules.

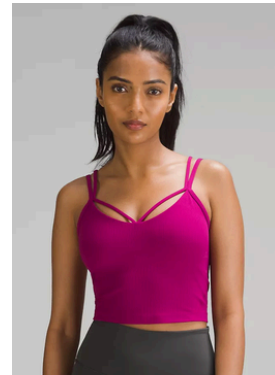
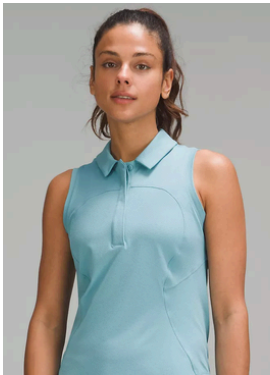
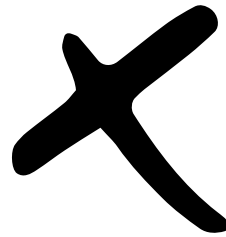
CLUBHOUSE, DINING ROOMS, OUTDOOR PATIO: Appropriate casual attire is acceptable in the clubhouse. Denim without tears or fraying is permitted in the clubhouse with the exception of the Clock Room. Bathing suits and workout attire are **not permitted**. No ripped, torn, or soiled clothing; no plunging necklines; no visible undergarments (boxers, bra straps, etc.).

HAT POLICY: Gentlemen are asked to remove their hats when seated indoors.

SPECIAL EVENTS: For all holiday brunches and club events, proper dress is required. Jeans, crop tops, flip flops, athletic clothing (other than proper golf course attire), sweatpants, t-shirts, and hoodies are **not allowed**. Dress to impress!

GOLF COURSE: Billed hats and visors must be worn forward. Ladies and gentlemen must wear collared shirts; blade collars, turtlenecks, and mock turtlenecks are also acceptable. Men's shirts must be tucked in. Pants and shorts may not have cargo-style exterior/protruding pockets. Women's skirts, skorts or shorts must provide full coverage while bending over; mid-thigh length is ideal. Sleeveless shirts are allowed, providing they have a collar, cover the midriff, and are not a Y racerback style. Shirts may be untucked if designed to be worn untucked. **Not permitted:** Denim, running shorts or workout gear, swimwear, tank tops, or t-shirts are allowed on the course or practice facilities. No metal spikes.

Golf clothing of the type displayed in the Golf Shop is a good guideline, though not all merchandise sold in the Golf Shop is considered golf attire. Please speak to a member of our staff if clarification is needed.







Frequently Asked Questions

FAQs

All information is subject to change after publication of this guide.

Do family members have club privileges? Yes, all membership categories include the primary member's spouse/partner and any dependent children up to age 25.

As a social member, can I practice on the driving range? Yes, social members may utilize the driving range immediately before one of their scheduled six (6) starts. Unlimited practice range passes can also be purchased for \$350.00 per season.

Can I transfer my membership if I resign? No, Blythefield Country Club does not offer the option to transfer your membership.

What is the Club's resignation policy? Members shall resign by providing the Club with 90-day written notice requesting resignation. Members are responsible for all applicable dues and charges during the 90-day notice period, and no refund of any prepaid fees (including dues) shall be made if a member elects to resign. Should the member desire to rejoin at a later date, he/she may reapply after a minimum separation period of twelve (12) months.

Who owns Blythefield Country Club? The Club is owned by its members. BCC is a 501(c)(7) "taxable membership organization" under Section 277 of the Internal Revenue Code.

What is the membership application process at BCC? The application process includes completion of a membership application form and payment of the initiation fee, followed by completion of a new member orientation. Once an application is complete and submitted to the Club, you will receive provisional membership while the Board of Directors reviews/approves your application. This process usually takes approximately 30 days.

How do I make a tee time? Call the Golf Shop at 616-363-1902 to set up a tee time, or use our website or mobile app to reserve a tee time. Reservations are available up to seven (7) days in advance.

FAQs

Is the golf course closed on Mondays? Sometimes the Club is closed on Mondays due to golf outings. In the event that there is not an outing scheduled, the course will open for play after 1:00 p.m. on Monday. Please contact the Golf Shop for information on Monday availability.

Is there an active women's golf program at BCC? Yes, we have a women's league that plays on Tuesday evenings. For female golfers just getting into the swing of things, we have the beloved Green League! This program includes weekly instruction and course play time with our player development professional, Andre Pillow.

Can members bring guests to the club for golf? Yes, any individual guest may play our course a maximum of six (6) times throughout the golf season, regardless of who the host member is.

Can members walk the course when playing golf? Yes. We offer pushcart storage for those who have their own cart, and rental push carts for those who do not. You may also support our wonderful caddie program and take your enjoyment of the game to a whole new level!

What is the Club's fiscal year? We are on a calendar fiscal year.

Can the initiation fee be paid in installments? Yes, new members may put down 50% at signing and 25% the following two years. If a member decides to leave the club before the completion of their payments, the remaining initiation fee balance is required to be paid.

Do all members of BCC have voting privileges? Yes, each membership category has a different number of votes: Regular (10 votes), Executive Intermediate (5 votes), Intermediate (5 votes), Junior (3 votes), Social/Non-Resident (1 vote).

Does Blythefield have food minimums? No.

FAQs

Do members have a club charge account? Yes, members charge club fees to their membership account. The club will email a statement on the first business day of each month which outlines applicable charges for the period. In an effort to keep accurate billing, it is highly recommended that you sign every chit with your name AND membership number. This process will help eliminate any confusion about member charges.

How are the Club's dues established? Dues are established by the Board of Directors based on the Club's annual operating budget and anticipated revenues/expenses.

Can members be assessed? What is the process for setting such assessments? Yes, Capital Assessments can be approved only by a majority vote of the voting membership for capital projects or any other valid purpose. Normally, the Board of Directors prepares a recommendation for any possible assessments, and the recommendation is put before the voting membership for approval. The Board may also assess the membership for non-capital needs, including any operating shortfalls.

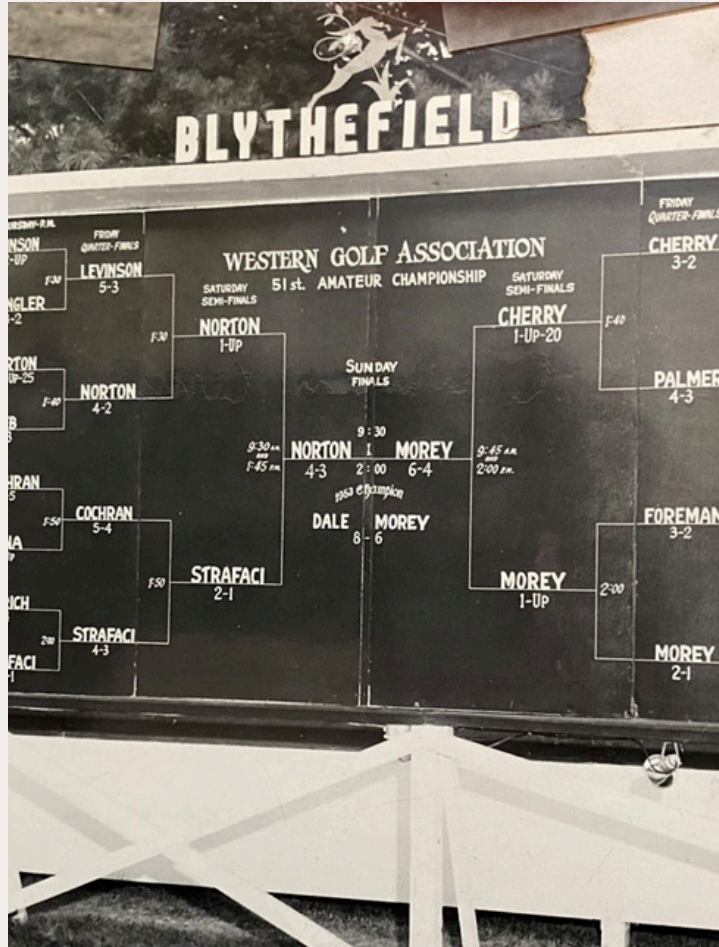
What will be on my bill? Your statement will show the charges made in the previous month and the dues for the current month. Charges may include greens fees, cart fees, guest fees, food and beverage purchases, etc.

How can I pay my bill? Payments can be made in the Administration Office during regular business hours. You may also enroll in our autopay ACH program (processed on the 15th of each month. Please contact **Maryann Malaney** at mmalaney@blythefieldcc.org for more information.

How can I view my member statement online? Please contact our office if you experience difficulty logging into our website.

- Go to www.blythefieldcc.org
- Select "Member Login" to access your account.
- Click on Member Central > Statements
- Once you have reached this page, you should be able to view all statements from Blythefield Country Club.





BLYTHEFIELD
COUNTRY CLUB